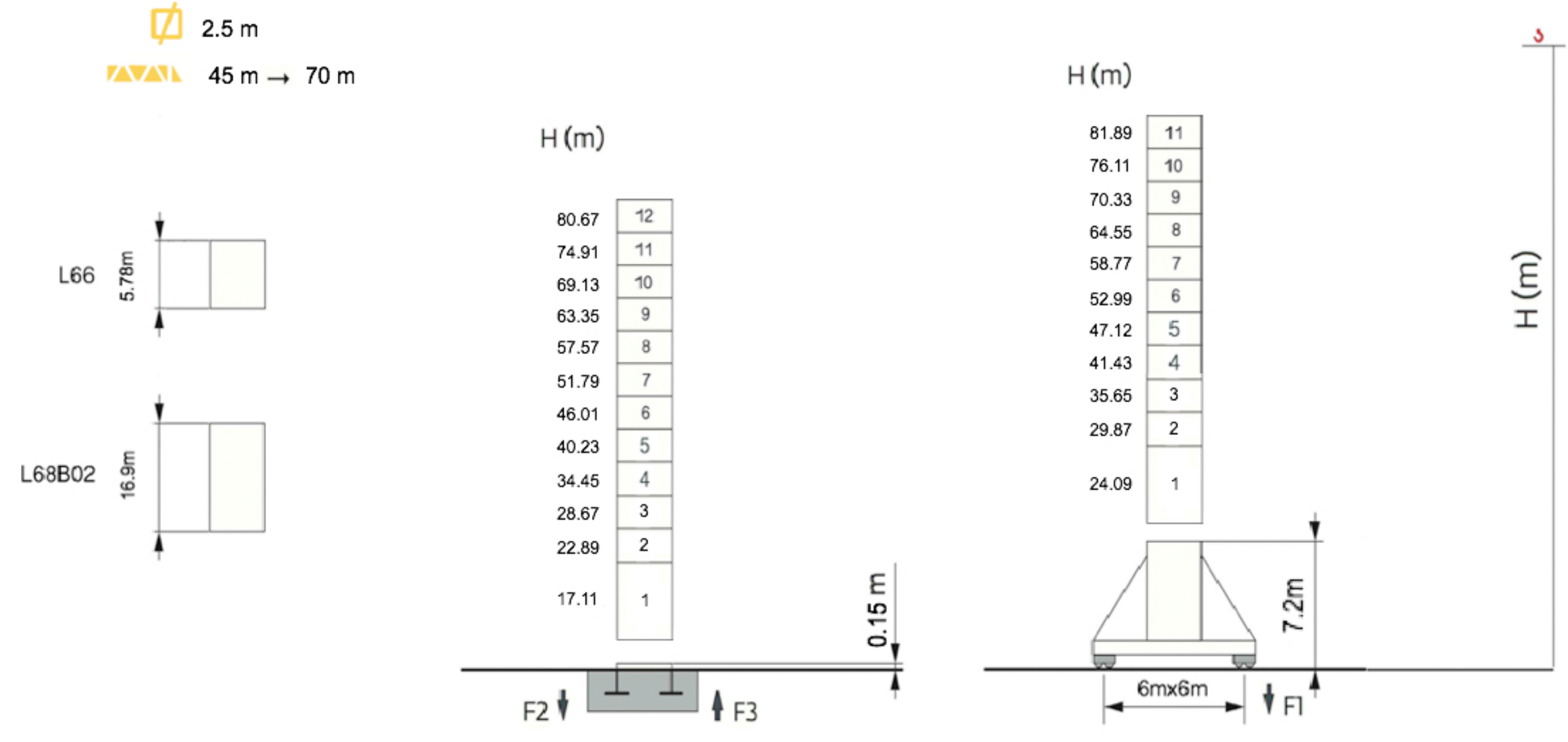
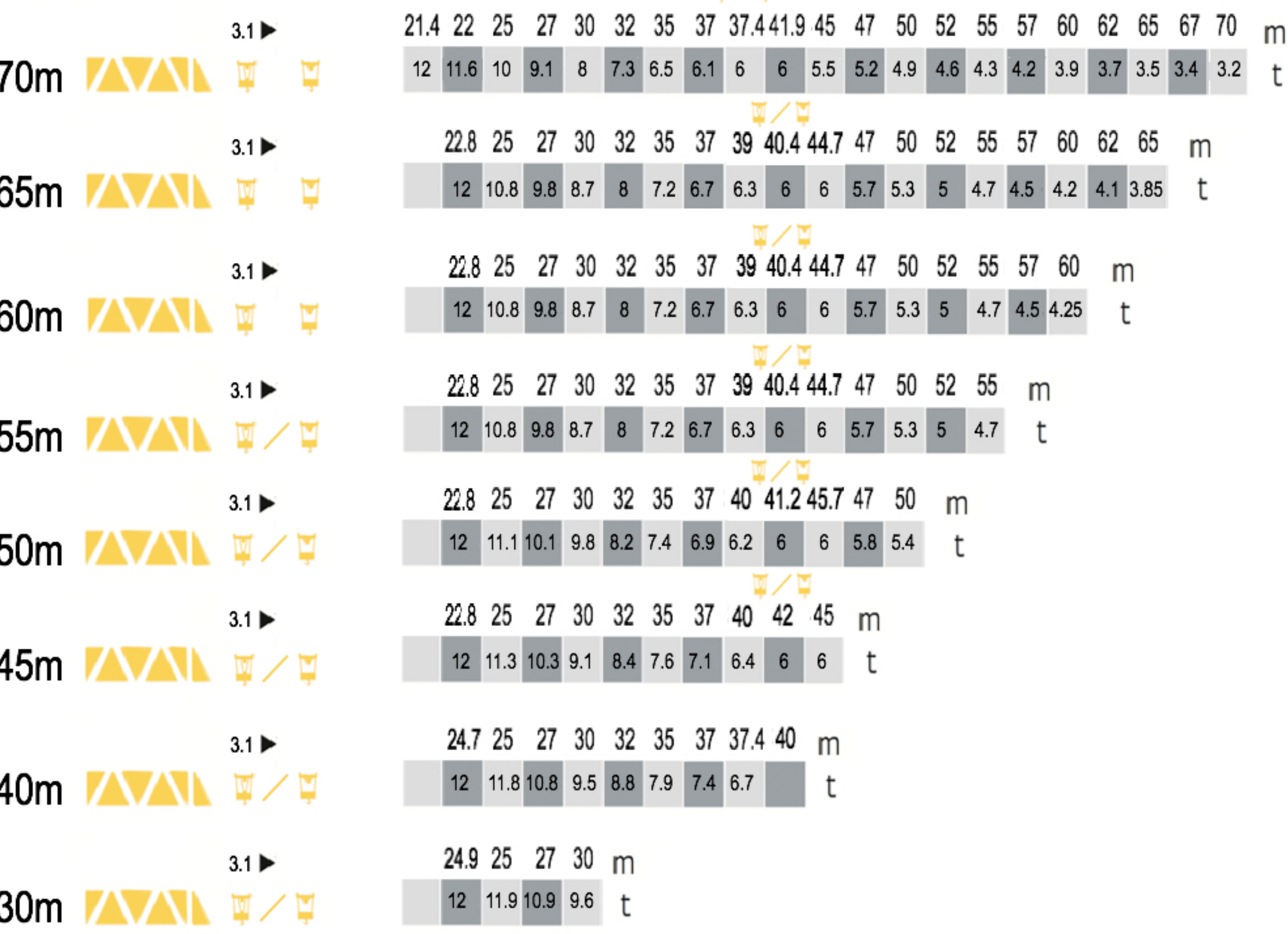


LX320 70

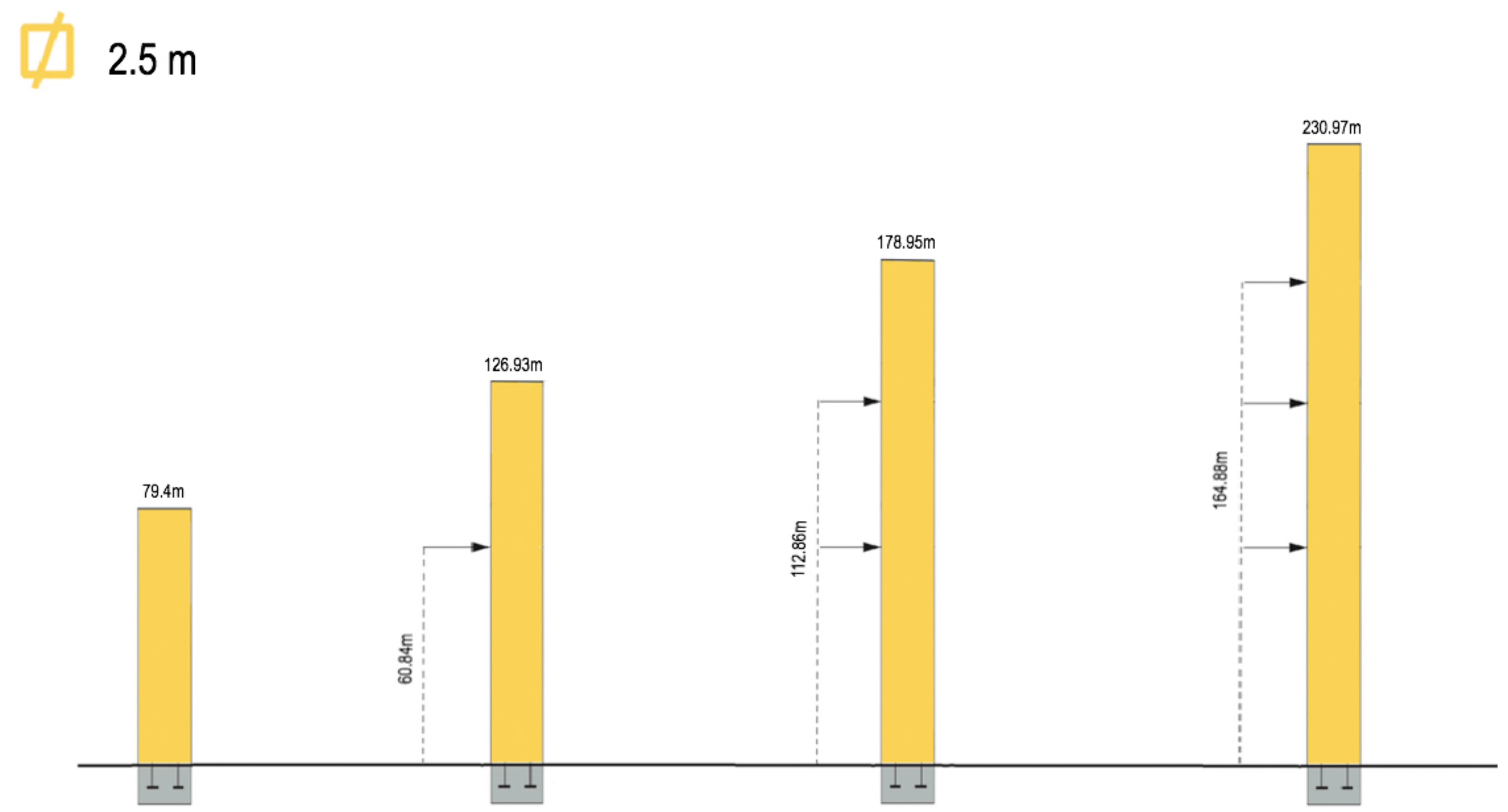
Mast - Reactions



Load Diagrams



Anchorage



Mechanisms

400 V - 50 Hz						hp	kW		
	Hoisting	m/min	0 → 40	0 → 85	0 → 20	0 → 42.5	70	55	525m
		t	6	3	12	6			
	Trolleying	m/min	0 → 72				7.5		
	Slewing	rpm	0 → 0.8				2x5.5		
	Travelling	▣ 2.5 m	16 → 32				6x5.2		
Main Supply		IEC 38 / CEI 38				400 V (+6% -10%) 50 Hz			
Necessary Electric Power						104.7kW			

Dimensions and Weight

Slewing crane part	▴ ▾ ▴ ▾ 70 m - 79.4LVF	L (m)	l (m)	h (m)	kg (+/- 5%)
Counter-jib		1520	1020	10910	6500
		1520	1020	2500	1000
		1520	1020	6390	1600
Cab		2500	1500	9100	5870
Cathead		9100	1500	2255	5870
Jib section		1380	1164	10000	2299
		1380	1132	10000	1897
		1380	1132	10000	1903
Jib section		1380	1117	5000	825
		1380	1117	5000	869
		1380	1103	5000	820
		1380	1103	5000	610
		1380	1083	5000	435
		1380	1064	5000	341
Trolley		2015	2000	980	800
Pulley block		1364	264	1965	500

Telescoping equipment		L (m)	l (m)	h (m)	kg (+/- 5%)
Telescopic cage		4370	3660	5240	6200

Crane bases		L (m)	l (m)	h (m)	kg
Fixing angles		800	800	1210	490
Half-bearer		2500	2500	5780	4350
		2500	2500	5780	4050
		2500	2500	5780	3700