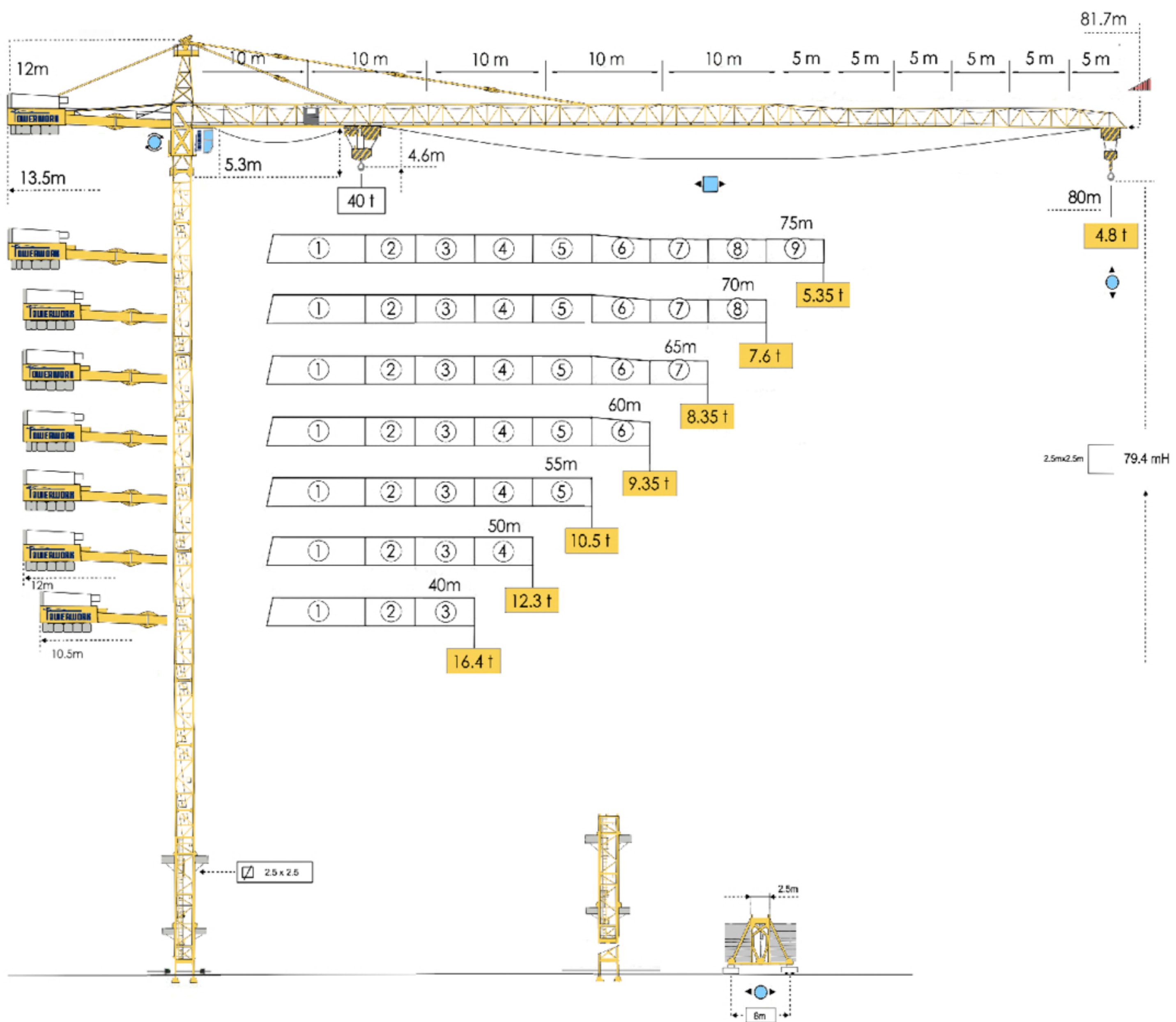
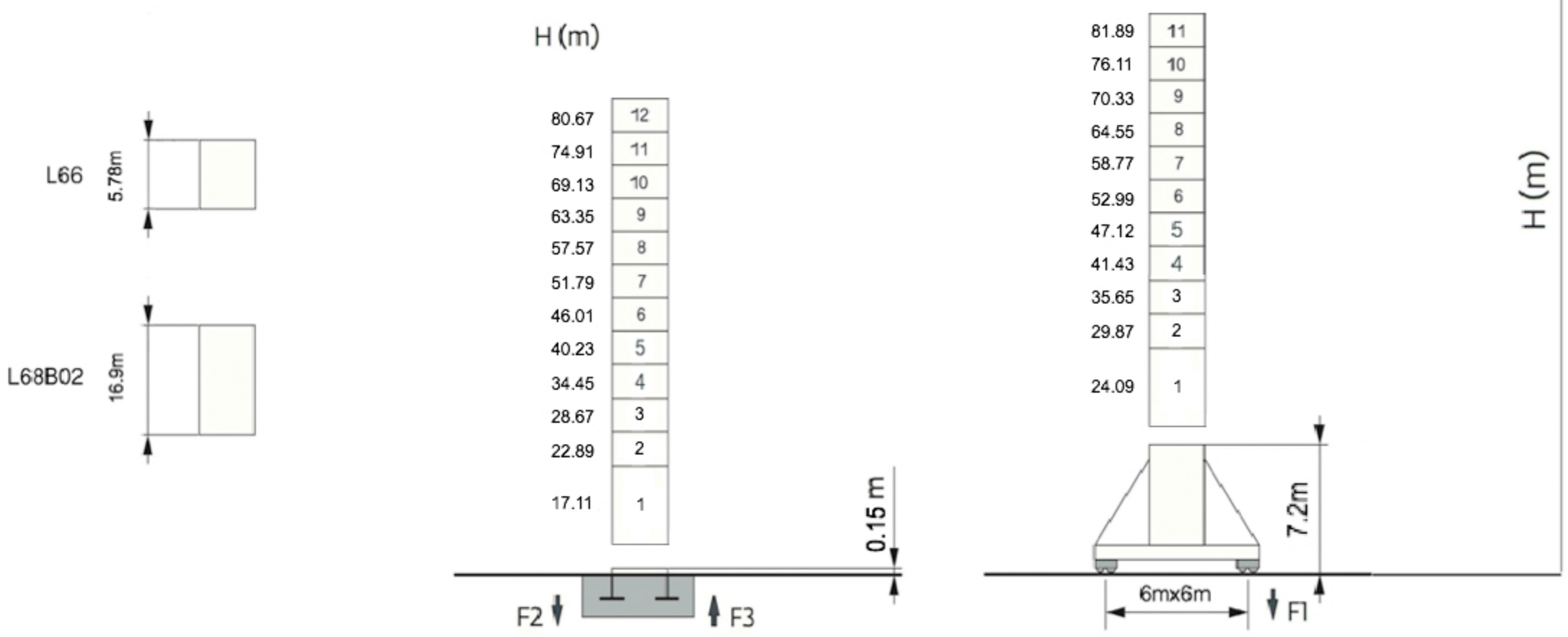


LX480 80

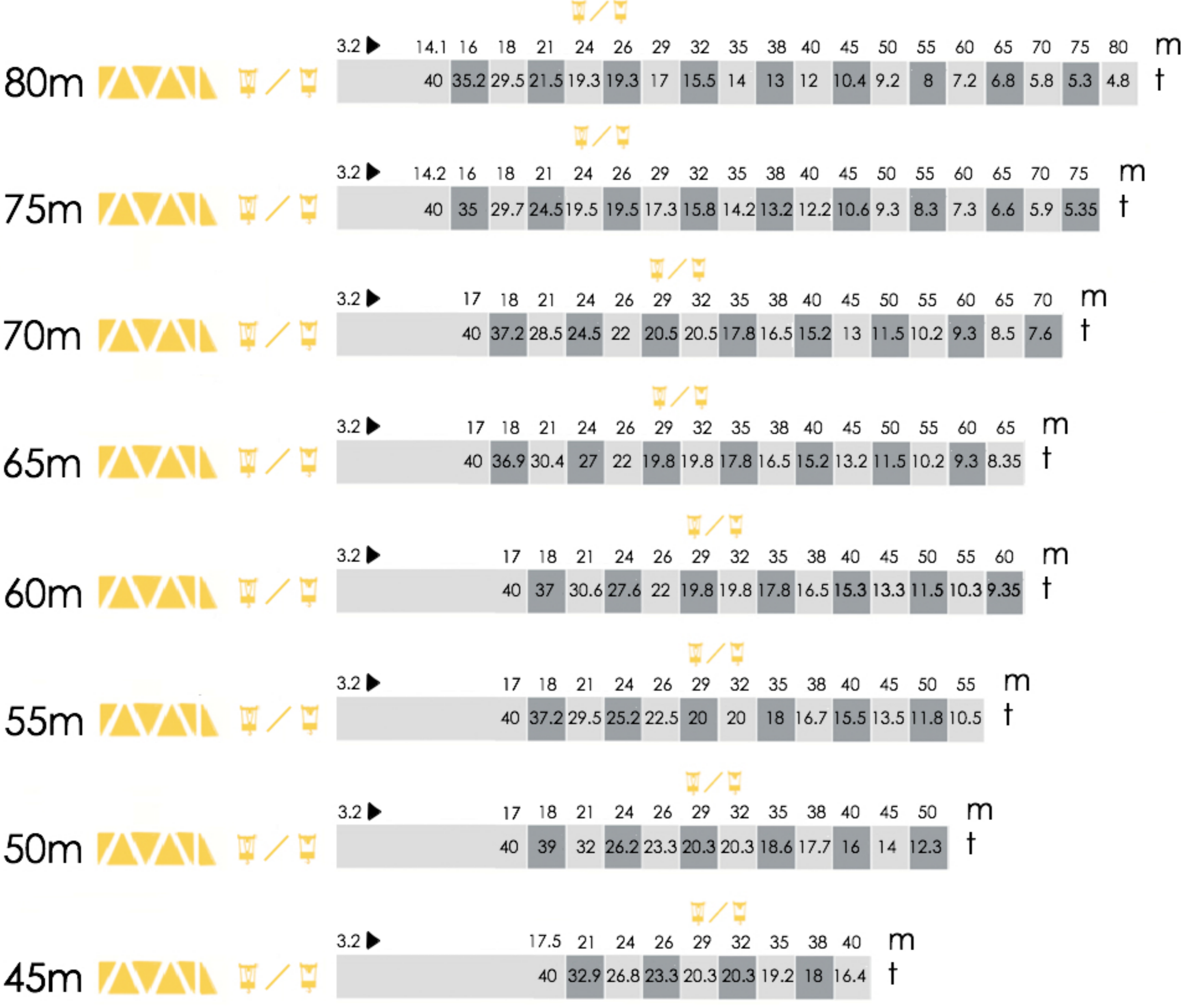


Mast - Reactions

2.5 m
 45 m → 70 m

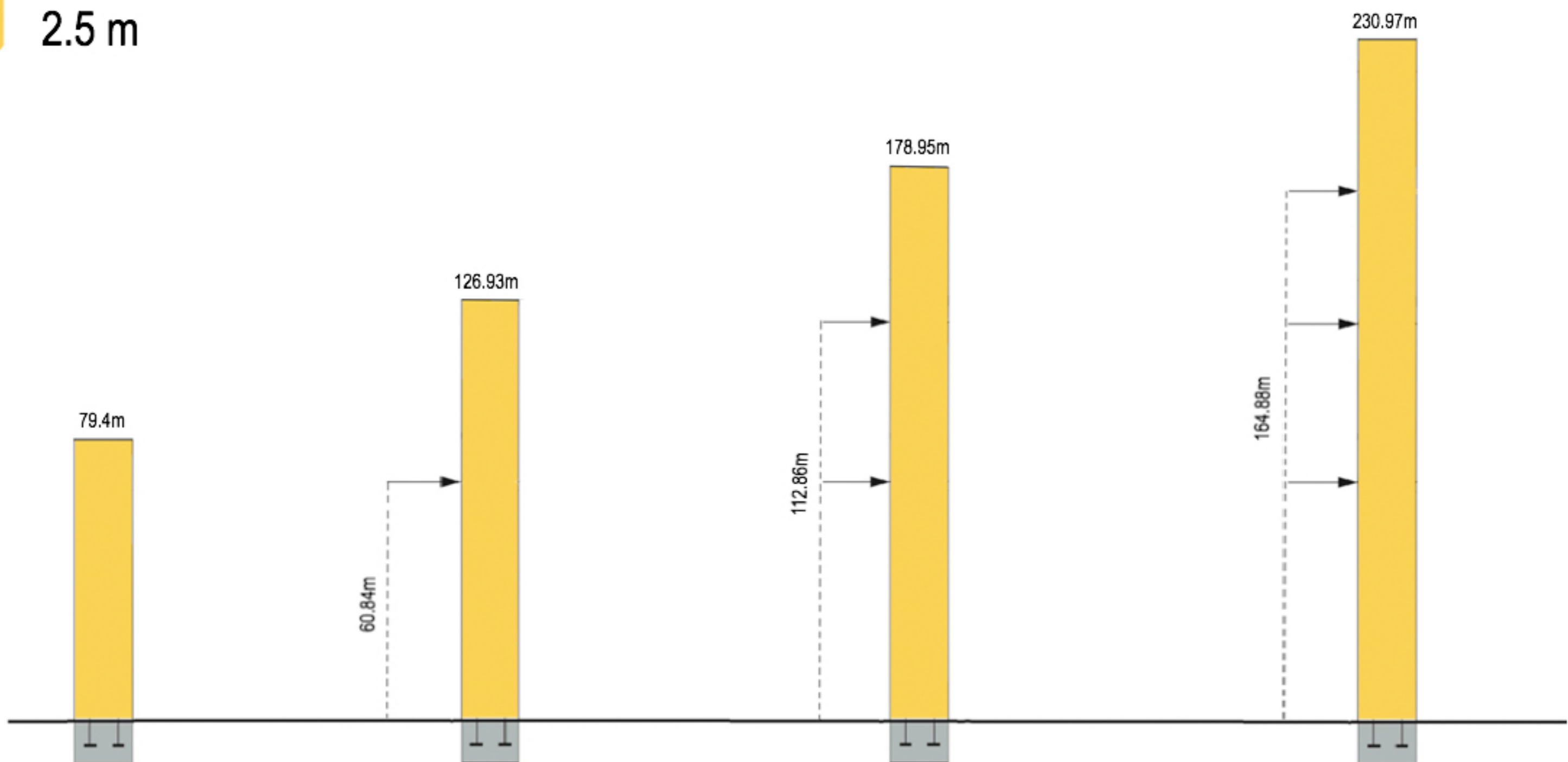


Load Diagrams



Anchorage

2.5 m



Mechanisms

400 V - 50 Hz							hp	kW	
	Hoisting	m/min	0 → 40	0 → 85	0 → 20	0 → 42.5	70	55	525m
		t	6	3	12	6			
	Trolleying	m/min	0 → 72				7.5		
	Slewing	rpm	0 → 0.8				2x5.5		
	Travelling	2.5 m	16 → 32				6x5.2		

Main Supply	IEC 38 / CEI 38	400 V (+6% -10%) 50 Hz
Necessary Electric Power	104.7kW	